

■ Features:

- ✓ No Load power consumption < 0.5W
- ✓ High AC input range
- ✓ Miniature size, high power density, high efficiency, long life and high reliability
- ✓ Withstand 300VAC surge input for 5 sec.
- ✓ Output protections: OLP/OVP/SCP/OPP
- ✓ Wide operating ambient temp (-25°C~70°C), 100% @50°C、60%@70°C
- ✓ Operating altitude up to 5000M
- ✓ All using 105°C long life electrolytic capacitors.
- ✓ 100% full load burn-in test
- ✓ Easy assembling from top side
- ✓ PCB soldering side with conformal coating
- ✓ Suitable for critical applications
- ✓ 3 years warranty

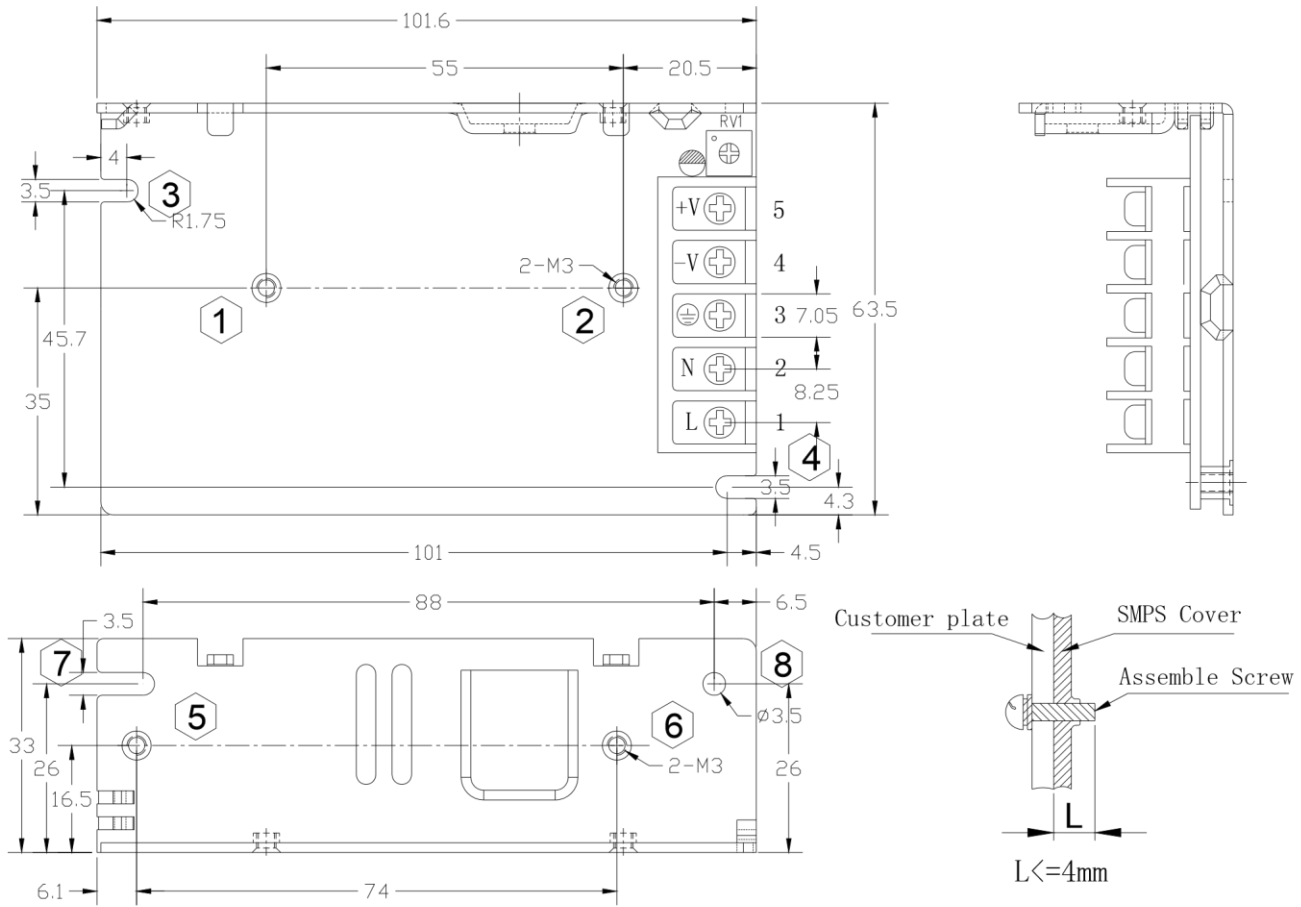


■ SPECIFICATIONN

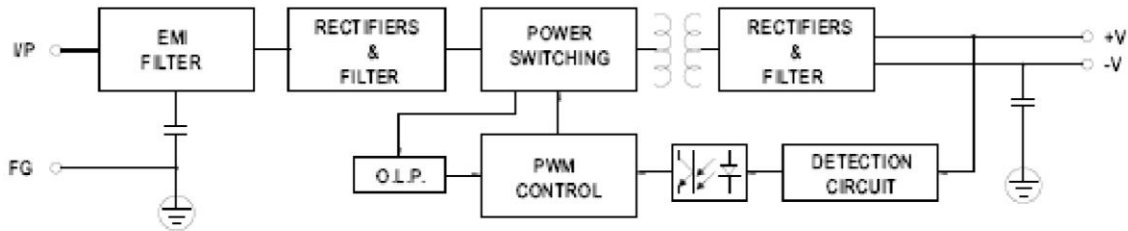
MODEL		PD-H40S12	PD-H40S24	
OUTPUT	DC Output	12V	24V	
	Rated Current	3.3A	1.7A	
	Current Range	0~3.3A	0~1.7A	
	Ripple and Noise	0~70°C	<80mV	<120mV
		-25~0°C	<180mV	<200mV
	Note 2			
	Voltage ADJ. Range	11.4~13.2V	22.8~26.4V	
	Voltage Accuracy	±3.0%	±3.0%	
	Line Regulation	±0.5%	±0.5%	
	Load Regulation	±1.0%	±1.0%	
	Set-up Time	<1S (230Vac input, Full load);		
	Hold up Time	>20mS(230Vac input, Full load);		
Temperature Coefficient	±0.03%/°C			
Overshoot and Undershoot	<5.0%			
INPUT	Voltage Range	176Vac~264Vac		
	Frequency Range	47Hz~63Hz		
	Efficiency (Typical)	115Vac input	83%	86%
		230Vac input	84%	87.5%
	AC Current (max.)	<0.6A(max)		
	Inrush Current (Typical)	<50A@264Vac Cold start		
Leakage Current	Input—output:<3.5mA Input—PG:<0.25mA			
PROTECTION	Over Load	105%~150% of rated output current, constant power, auto recovery		
	Over power	105%~150% of rated output power, constant power		
	Over Voltage	110%~150% of rated output voltage, Constant Voltage		
	Short Circuit	Long-term mode, auto recovery		
ENVIRONMENT	Operating amb. Temp. & Hum.	-25°C~70°C; 20%~90%RH No condensing (refer to the derating curve)		
	Storage Temp. & Hum.	-40°C~85°C; 10%~95%RH No condensing		
SAFETY & EMC	Safety Standards	EN60950-1: 2006		
	Withstand Voltage	Primary-Secondary:3.0KVac; ≤10mA .Primary-PG:1.5KVac; ≤10mA. Secondary-PG:0.5KVDC; ≤10mA.		
	Note 3	Isolation Resistance	≥100M ohms	
	EMI Conduction& Radiation	Compliance to EN55022 Class B / FCC Part15 B		
	EMS Immunity	Compliance to EN61000-4-2,3,4,5,6,8,11;		
OTHERS	MTBF (MIL-HDBK-217F)	More than 200,000Hrs (25°C, Full load)		
	Dimension (L*W*H)	101.6×63.5×33mm		
	Packing	60PCS/CTN, 15.18KGS, 0.06CBM		
	Cooling method	Cooling by free air convection		
NOTE	<p>1. All parameters NOT specially mentioned are measured at 230Vac input, rated load and 25°C of ambient temperature.</p> <p>2. Measured at 20MHz of bandwidth by using a 12" twisted pair-wire terminated with a 0.1 uF & 10uF parallel capacitor.</p> <p>3. The SPS is considered a component which will be installed into final equipment. The equipment must be re-confirmed that it still meets EMC directives.</p>			

■ **Mechanical Specification**

Unit: mm



■ **Block Diagram**



■ **Derating Curve**

