

## 45W Single Output Switching Power Supply



CASE: P21-4

**Features:**

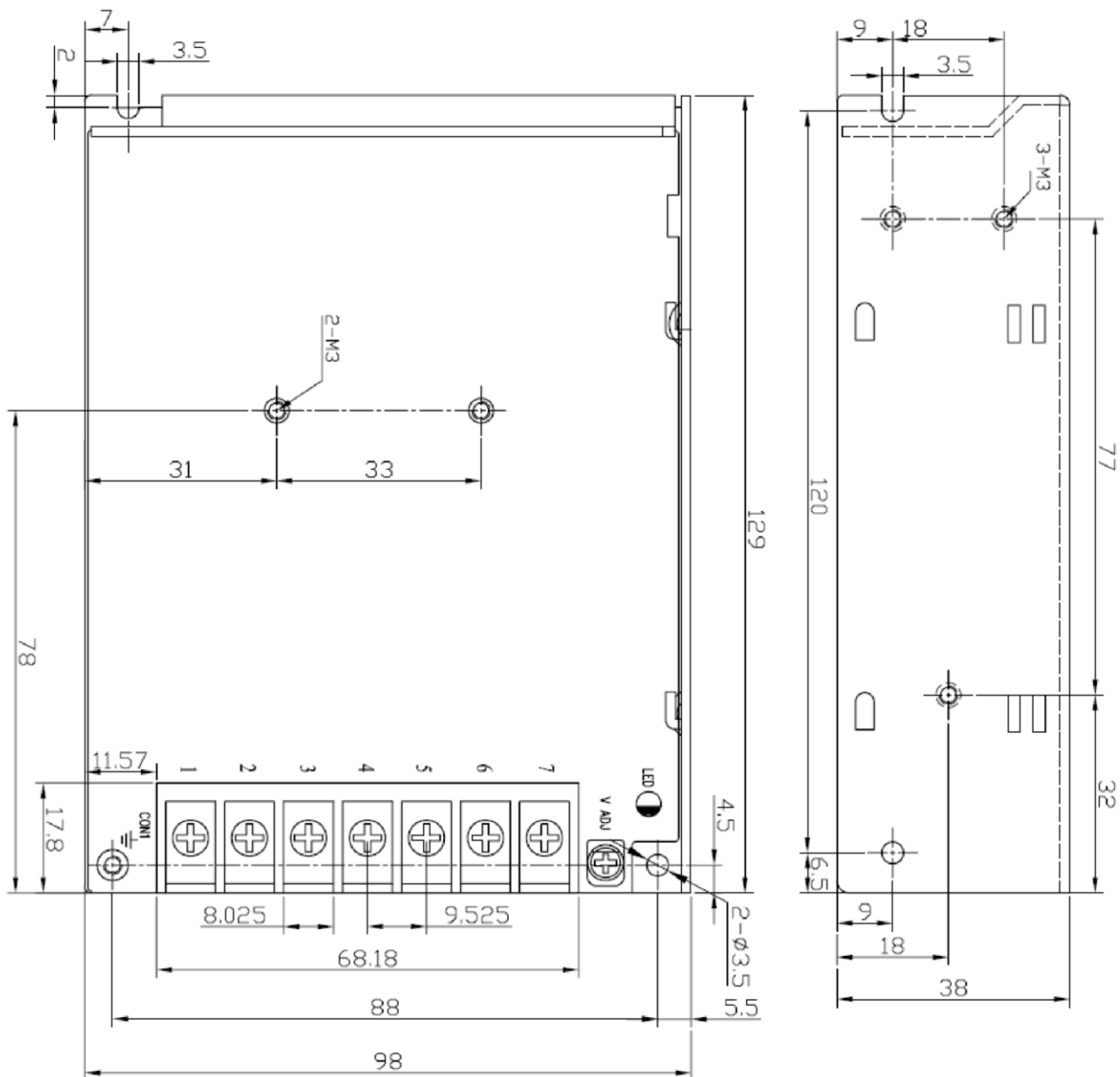
- Miniature
- AC input 176-264V only
- Protections : SCP/ OLP/ OVP
- High reliability, Low cost
- 100% full load burn-in test

Input Volt. & Freq.....	176~264VAC/47~63Hz (210~370VDC)
Inrush Current .....	40A@230Vac (cold start)
DC adjustment range.....	± 10%(rated output voltage)
Overload protection .....	105%~150% (rated load), Auto-recovery
Over voltage protection .....	115%~135%(rated output voltage)
short circuit protection.....	Long-term
Setup time .....	≤ 1S@230VAC
Hold-up time .....	≥ 20mS@230VAC
Withstand voltage .....	Input-Output: AC1500V, 1min Input-Ground: AC1500V, 1min Output-Ground: DC500V, 1min
Operating ambient .....	0°C~50°C; 20%~90%RH (Non condensing)
Safety standards .....	EN/UL60950
EMC standards.....	EN55022 Class B; EN61000-4-2/-3/-4/-5/-6/-11
Dimension(L*W*H) .....	129 × 98 × 38mm

Model No.	DC Output	Tol.	R&N	Effi.
GZM-H45S5	5V 10A	±3%	≤ 50mV	72%
GZM-H45S15	15V 3A	±3%	≤ 150mV	80%
GZM-H45S24	24V 2A	±3%	≤ 240mV	80%

## ④ Mechanical Specification

Unit: mm



Pin No.	Assignment
1	AC input -L
2	AC input+N
3	F.G
4-5	DC output -V
6-7	DC output +V